

New Products from CST—April 2026

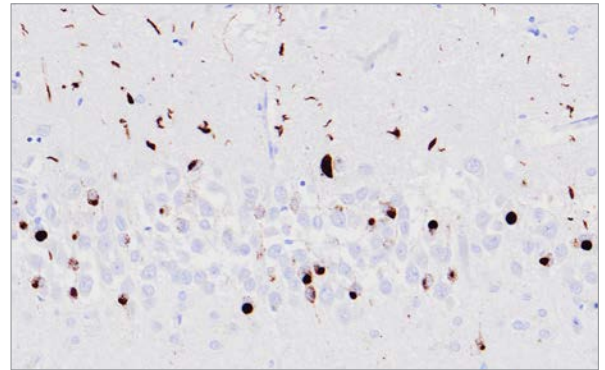
We are continually expanding our portfolio to meet your research needs. Check out the new products released this month!

Phospho-TDP43 (Ser409/Ser410) (F9S3F) Rabbit Monoclonal Antibody #77613

Protein Aggregation Marker in the Central Nervous System

TDP-43 is involved in transcriptional regulation and exon splicing. Normally, TDP43 is a nuclear protein. However, in amyotrophic lateral sclerosis (ALS) and frontotemporal lobar degeneration (FTLD), TDP-43 translocates to the cytoplasm and abnormally aggregates. During this process, TDP-43 undergoes various post-translational modifications, including ubiquitination, phosphorylation at Ser403/Ser404 or Ser409/Ser410, and abnormal cleavage, resulting in insoluble aggregates. Analysis of phosphorylated TDP-43 allows for the visualization of disease-specific abnormal aggregates. #77613 is suitable for WB and IHC-P using human and mouse samples.

KEYWORDS: proteinopathy, ALS, FTLD



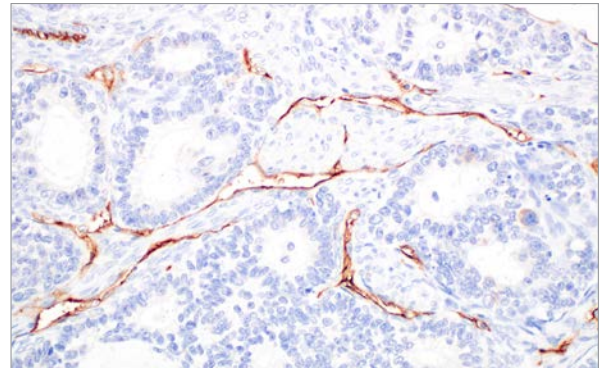
IHC-P: IHC analysis of paraffin-embedded human hippocampal brain tissue with TDP43 proteinopathy using #77613. Data kindly provided by Vera Wiersma of the Polymenidou Lab, University of Zurich, and Amsterdam UMC.

CD34 (F8T5S) Rabbit Monoclonal Antibody #71771

Tumor suppressor protein p21 Waf1/Cip1

CD34 is a type I transmembrane protein expressed on hematopoietic stem/progenitor cells, vascular endothelial cells, and some fibroblasts and soft tissue tumors. The extracellular domain of CD34 shares homology with CD43, a protein involved in cell-cell adhesion, and CD34 has been shown to function as a negative regulator of cell adhesion. CD34 is also a substrate for PKC, and PKC activation is linked to CD34 surface expression. This antibody is important for identifying CD34-positive tumors, including hematopoietic tumors, solitary fibrous tumor (SFT), dermatofibrosarcoma (DFSP), and gastrointestinal stromal tumor (GIST). #71771 is suitable for WB, IHC-P, and FC-FP using human, mouse, and rat samples.

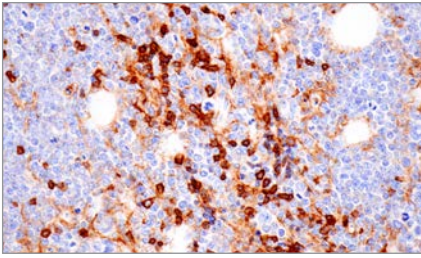
KEYWORDS: cell cycle arrest, senescence, cancer



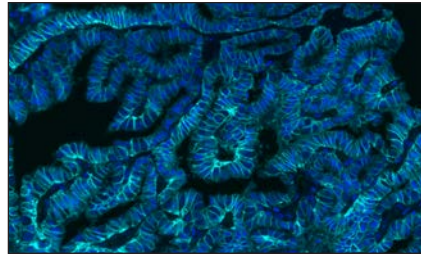
IHC-P: IHC analysis of paraffin-embedded human colon adenocarcinoma using #71771.



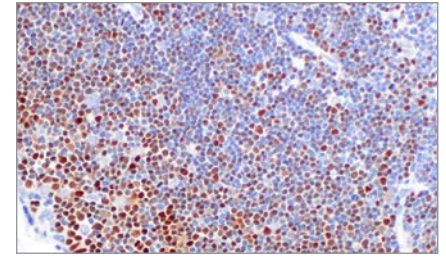
Learn more at
cellsignal.com/newproducts



CD162/PSGL-1 (F6N5G) Rabbit Monoclonal Antibody #78211



EpCAM (D9S3P) Rabbit Monoclonal Antibody (Alexa Fluor® 750 Conjugate) #86177



DNTT (F4U2U) Rabbit Monoclonal Antibody #55271

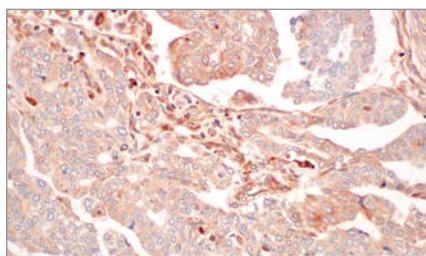
PRODUCT	APPLICATIONS	REACTIVITY
Cell Biology - Adhesion/Extracellular Matrix		
59799S E-Cadherin (24E10) Rabbit Monoclonal Antibody (Alexa Fluor® 750 Conjugate)	IHC-P	H, M, (B, Dg, Pg)
78211S CD162/PSGL-1 (F6N5G) Rabbit Monoclonal Antibody	WB, IP, IHC-P, FC-FP, FC-L	M
78211T		
93602S CD162/PSGL-1 (F6N5G) Rabbit Monoclonal Antibody (IF Formulated)	IF-F, IF-IC	M
93602T		
86177S EpCAM (D9S3P) Rabbit Monoclonal Antibody (Alexa Fluor® 750 Conjugate)	IHC-P	H, M, Mk
31001C PathScan® RP Phospho-FAK (Tyr576/577) Sandwich ELISA Kit	ELISA+	H, M, R
16514S HAPLN1 (F2Q6U) Rabbit Monoclonal Antibody	WB	H
16514T		
43397S PCDH9 (F7U5P) Rabbit Monoclonal Antibody	WB	H, M, R
43397T		
Cell Biology - Apoptosis		
39155SF Bax (E2Q7G) Rabbit Monoclonal Antibody (BSA and Azide Free)	WB, ELISA+	H
82186SF Bax (E8A7W) Rabbit Monoclonal Antibody (BSA and Azide Free)	ELISA+	H
27411S Bax Matched Antibody Pair	ELISA+	H
20330P c-IAP1 (F7C3U) Rabbit Monoclonal Antibody (trFluor™ Europium Cryptate Conjugate)	E-P	H, M
Cell Biology - Ca, cAMP & Lipid Signaling		
57032S PI4KB (F4P5W) Rabbit Monoclonal Antibody	WB, IP	H, M, R, Mk
57032T		
Cell Biology - Cell Cycle		
55271S DNTT (F4U2U) Rabbit Monoclonal Antibody	WB, IP, IHC-P, FC-FP	H
55271T		
66759S DNTT (F5U7V) Rabbit Monoclonal Antibody	WB	H, M
66759T		
Cell Biology - Cytoskeletal		
48351S Septin-7 (F8G8Q) Rabbit Monoclonal Antibody	WB	H, M, R
48351T		
Cell Biology - DNA Damage/Senescence		
54476SF MDM2 (D1V2Z) Rabbit Monoclonal Antibody (BSA and Azide Free)	WB, IF-IC, ELISA+	H
32412S MDM2 Matched Antibody Pair	ELISA+	H
Cell Biology - MAP kinase		
99367SF FRA1 (D80B4) Rabbit Monoclonal Antibody (BSA and Azide Free)	WB, ELISA+	H, (Mk)
10125SF Phospho-FRA1 (Ser265) (D22B1) Rabbit Monoclonal Antibody (BSA and Azide Free)	WB, ELISA+	H, M, R, (Mk, B, Hr, F)
48293S Phospho-FRA1 (Ser265) Matched Antibody Pair	ELISA+	H
31726SF p38 alpha MAPK (L53F8) Mouse Monoclonal Antibody (BSA and Azide Free)	WB, ELISA+	H, M, R, Mk, Pg, Sc
73297S Total p38 alpha MAPK Matched Antibody Pair	ELISA+	H, M, R, Mk
37111SF p38 MAPK (A7Q7I) Rabbit Monoclonal Antibody (BSA and Azide Free)	ELISA+	H, M, R, Mk
77652SF c-Raf (E6W4N) Rabbit Monoclonal Antibody (BSA and Azide Free)	ELISA+	H, M, R, Mk
85554SF c-Raf (D5X6R) Mouse Monoclonal Antibody (BSA and Azide Free)	WB, ELISA+	H, M, R, Mk, B, Pg
90146S Total c-Raf Matched Antibody Pair	ELISA+	H, M, R, Mk



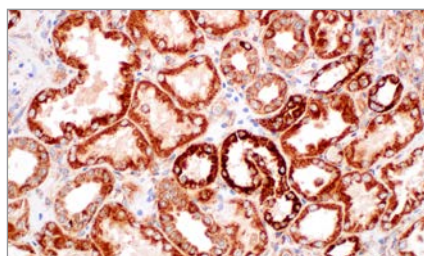
Learn more at
cellsignal.com/newproducts



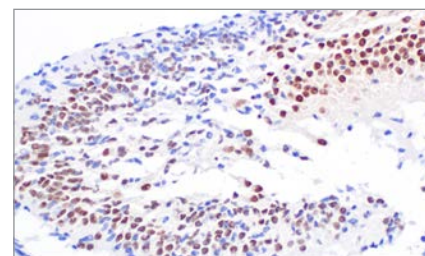
Cell Signaling
 TECHNOLOGY®



ERAP2 (F3W9R) Rabbit Monoclonal Antibody #50824



TMEM192 (F1E6H) Rabbit Monoclonal Antibody #26976



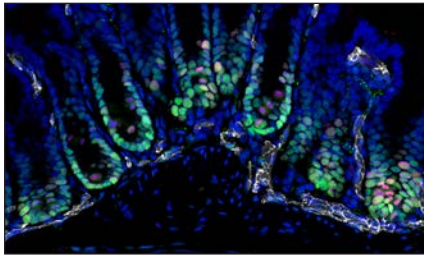
NeuroD6/NeuroD2 (F2Z7U) Rabbit Monoclonal Antibody #79875

PRODUCT	APPLICATIONS	REACTIVITY
Cell Biology - MAP kinase (cont.)		
54004C PathScan® RP Ras Sandwich ELISA Kit	ELISA+	H, Mk
75848C PathScan® RP K-Ras Sandwich ELISA Kit	ELISA+	H, Mk
Cell Biology - Proteostasis		
50824S ERAP2 (F3W9R) Rabbit Monoclonal Antibody	WB, IHC-P	H
50824T		
49367S FBXW7 (F8B6C) Rabbit Monoclonal Antibody	WB, IP	H
49367T		
Cell Biology - RTK-Cell Biology		
94295S FGF Receptor 2 (F3N9K) Rabbit Monoclonal Antibody	WB, IP, IF-IC	H, M, (R)
94295T		
Cell Biology - Vesicle and Protein Trafficking		
32119S LAMP1 (D2D11) Rabbit Monoclonal Antibody (Alexa Fluor® 750 Conjugate)	IHC-P	H, Mk
26976S TMEM192 (F1E6H) Rabbit Monoclonal Antibody	IHC-P	H, M
26976T		
Chromatin Profiling Kit		
84647S CUT&RUN Assay Kit (with Drosophila Spike-In Control)	C&R	-
29811S Drosophila Spike-In Control Kit for CUT&Tag (Rabbit)	C&T	-
19629S Drosophila Spike-In Control Kit for CUT&Tag (Mouse)	C&T	-
Complementary Ab - Isotype		
56870S Mouse (E5Y6Q) Monoclonal Antibody IgG2a Isotype Control (mFluor™ Violet 510 Conjugate)	FC-FP, FC-L	-
Complementary Ab - TAG		
61235S Myc-Tag (9B11) Mouse Monoclonal Antibody (mFluor™ Violet 510 Conjugate)	FC-FP	All
Developmental Biology - DIFFERENTIATION - Transcription Factor		
79875S NeuroD6/NeuroD2 (F2Z7U) Rabbit Monoclonal Antibody	W, IP, IHC-P, IF-IC	H, M, R
79875T		
Developmental Biology - HIPPO		
60429S VGLL4 (F5U7N) Rabbit Monoclonal Antibody	WB, IP, IHC-P, IF-F, IF-IC	H, M, R, Mk
60429T		
Developmental Biology - TGFβ/BMP		
78908S SMAD2/3 (D7G7) Rabbit Monoclonal Antibody (Alexa Fluor® 488 Conjugate)	FC-FP	H, M, R, Mk
90386S SMAD2/3 (D7G7) Rabbit Monoclonal Antibody (Alexa Fluor® 647 Conjugate)	FC-FP	H, M, R, Mk
41181P SMAD3 (C67H9) Rabbit Monoclonal Antibody (Biotinylated)	WB, ELISA+	H, M, R, Mk, (X, Z, B)
26664S Phospho-TGF-beta Receptor I (Ser165) (F5E2G) Rabbit Monoclonal Antibody	WB	H, (M, R)
26664T		
Epigenetics - ATP-Dependent Chromatin Remodeling Enzymes		
52152SF Reptin/RuvBL2 (D8N3J) Rabbit Monoclonal Antibody (BSA and Azide Free)	WB	H, M, R, Mk, (Hm, X, Z, B, Dg, Pg, F, Chimp, GP, Rab)
Epigenetics - Histones and Histone Modifications		
27774S Phospho-Histone H3 (Ser10) (D7N8E) Rabbit Monoclonal Antibody (Alexa Fluor® 488 Conjugate)	IHC-P, FC-FP	H, M, R, Mk, (Hm, X, Sc)
96225S Acetyl-Histone H3 (Lys27) (D5E4) Rabbit Monoclonal Antibody (Alexa Fluor® 750 Conjugate)	FC-FP	H, M, R, Mk, (Hm, X, Z, Hr, GP, Rab)

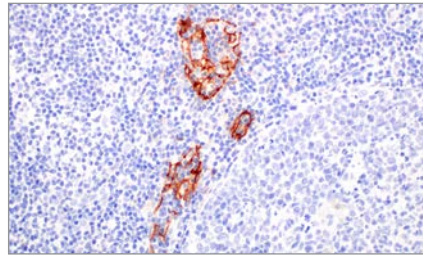


Learn more at
cellsignal.com/newproducts

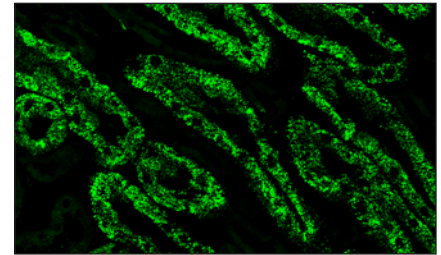
Cell Signaling
 TECHNOLOGY®



VGLL4 (F5U7N) Rabbit Monoclonal Antibody #60429



LYVE-1 (F7W7U) Rabbit Monoclonal Antibody #24084



Cpt1a (F6A4D) Rabbit Monoclonal Antibody #92147

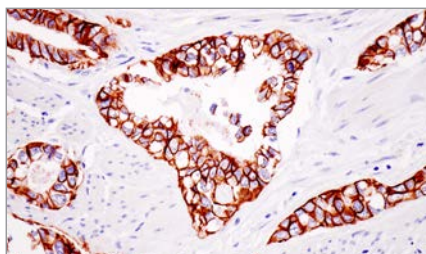
PRODUCT		APPLICATIONS	REACTIVITY
Epigenetics - Nuclear Structure			
71548S	SUN1 (F5R6C) Rabbit Monoclonal Antibody	WB, IP, IF-IC	H
71548T			
Epigenetics - Translational Control			
99442S	eRF3 (FIK2P) Rabbit Monoclonal Antibody	WB	H, M, R, Mk
99442T			
Immunology - Autoimmunity and Inflammation			
60507S	IL1F10 (F5U1T) Rabbit Monoclonal Antibody	WB	H
60507T			
Immunology - Cell Autonomous Innate Immunity			
25192S	STING (E9X7F) Rabbit Monoclonal Antibody (PE Conjugate)	FC-FP	H, M
16844S	STING (D2P2F) Rabbit Monoclonal Antibody (Alexa Fluor® 750 Conjugate)	IHC-P	H, M, Hm
97852S	Phospho-STING (Ser366) (E9A9K) Rabbit Monoclonal Antibody (Alexa Fluor® 488 Conjugate)	IF-IC, FC-FP	H
Immunology - Immune Checkpoints and Ligands			
36924S	FGL1 (E7CIQ) Rabbit Monoclonal Antibody (Alexa Fluor® 488 Conjugate)	FC-FP	H
44825S	FGL1 (E7CIQ) Rabbit Monoclonal Antibody (Alexa Fluor® 647 Conjugate)	FC-FP	H
79353C	PathScan® RP LAG3 Sandwich ELISA Kit I	ELISA+	H
24631C	PathScan® RP LAG3 Sandwich ELISA Kit II	ELISA+	M
61452S	PD-1 (NAT105) Mouse Monoclonal Antibody (Alexa Fluor® 647 Conjugate)	FC-L	H
Immunology - Inflammasome			
85658P	Cleaved-IL-1 beta (Asp116) (D3A3Z) Rabbit Monoclonal Antibody (Biotinylated)	WB, ELISA+	H
46202SF	IL-18 (D2F3B) Rabbit Monoclonal Antibody (BSA and Azide Free)	WB, ELISA+	H
96575S	IL-18 Matched Antibody Pair	ELISA+	H
Immunology - NFkappaB Signaling			
5209P	Phospho-IkappaB alpha (Ser32) (I4D4) Rabbit Monoclonal Antibody (Biotinylated)	WB	H, M, R, Mk, (C, B, Dg, Pg, GP)
4025P	Phospho-NF-kappaB p65 (Ser536) (93H1) Rabbit Monoclonal Antibody (Biotinylated)	WB, ELISA+	H, M, R, Hm, Mk, Pg, (Dg)
Immunology - Phenotyping and Functional Markers			
57473S	CD4 (F6R7K) Rabbit Monoclonal Antibody	WB, IF-F	M, R
57473T			
71771S	CD34 (F8T5S) Rabbit Monoclonal Antibody	WB, IHC-P, FC-FP	H, M, R, (Hm, Rab)
71771T			
24566SF	CD79B (D2N3H) Rabbit Monoclonal Antibody (BSA and Azide Free)	ELISA+	H
71713SF	CD79B (D5K3Q) Rabbit Monoclonal Antibody (BSA and Azide Free)	ELISA+	H
68235S	Total CD79B Matched Antibody Pair	ELISA+	H
20634SF	Eosinophil peroxidase (F3C2H) Rabbit Monoclonal Antibody (BSA and Azide Free)	WB, IHC-P	H, M, R
89780S	LY6E (F2C3Z) Rabbit Monoclonal Antibody	WB, FC-FP, FC-L	H
89780T			
24084S	LYVE-1 (F7W7U) Rabbit Monoclonal Antibody	WB, IHC-P	H
24084T			
46814S	MHC Class I (E8E7N) Rabbit Monoclonal Antibody (Alexa Fluor® 750 Conjugate)	IHC-P	H, M
88714SF	MHC Class II (I-E alpha) (F8N7J) Rabbit Monoclonal Antibody (BSA and Azide Free)	WB, IHC-P	M



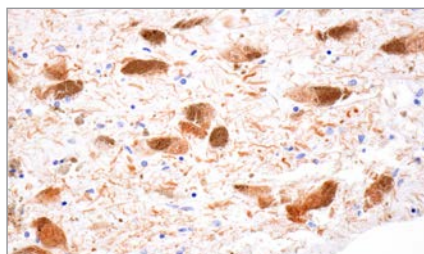
Learn more at
cellsignal.com/newproducts



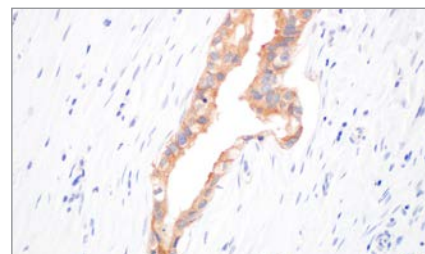
Cell Signaling
 TECHNOLOGY®



LAT1/SLC7A5 (F5C8T) Rabbit Monoclonal Antibody #74579



DDC (F1E8A) Rabbit Monoclonal Antibody #76893



HCARI/GPR81 (F9I8Q) Rabbit Monoclonal Antibody #20689

PRODUCT	APPLICATIONS	REACTIVITY
Immunology - Transcription Factors (Hematopoiesis and Leukemogenesis)		
20560SF ThPOK (D9V5T) Rabbit Monoclonal Antibody (BSA and Azide Free)	WB	H, M
Immunology - Tumor Microenvironment		
78370S beta2-microglobulin (D8P1H) Rabbit Monoclonal Antibody (Alexa Fluor® 647 Conjugate)	IHC-P, IF-IC	H, Mk
Metabolism - Autophagy		
19004S CALCOCO1 (F4P2D) Rabbit Monoclonal Antibody	WB, IP	H, M, R
19004T		
74217S WIPI2 (F6A9G) Rabbit Monoclonal Antibody	WB, IP, IF-IC	H, M, R
74217T		
Metabolism - Biochemical Metabolism and Signaling		
92147S Cpt1a (F6A4D) Rabbit Monoclonal Antibody	WB, IP, IF-F, IF-IC	M
92147T		
31966S CYP51A1 (F5M4N) Rabbit Monoclonal Antibody	WB	H, M, R
31966T		
86637S HPGDS (F2P9V) Rabbit Monoclonal Antibody	WB	H, M
86637T		
74579S LAT1/SLC7A5 (F5C8T) Rabbit Monoclonal Antibody	WB, IHC-P, FC-FP	H, R
74579T		
17618S P5CS/ALDH18A1 (F2I9F) Rabbit Monoclonal Antibody	WB	H, M, R
17618T		
Motif		
28513P Phospho-Tyrosine (D2D1) Rabbit Monoclonal Antibody (trFluor™ Europium Cryptate Conjugate)	E-P	All
Neuroscience - Neural function (neurite extension, axonal guidance, synaptogenesis, myelination and neuron-glia cell interactions)		
24906S RGMb (F8C2M) Rabbit Monoclonal Antibody	WB, IP	H
24906T		
Neuroscience - Neurodegeneration: Other		
77613S Phospho-TDP43 (Ser409/Ser410) (F9S3F) Rabbit Monoclonal Antibody	WB, IHC-P	H, M
77613T		
70295S TRIM9 (F1E9N) Rabbit Monoclonal Antibody	IF-F, IF-IC	H, M
70295T		
Neuroscience - Parkinson's disease		
74184P alpha-Synuclein (D37A6) Rabbit Monoclonal Antibody (Biotinylated)	WB	M, R
Neuroscience - Pre-synapse & transmitters		
76893S DDC (F1E8A) Rabbit Monoclonal Antibody	IP, IHC-P	H
76893T		
Neuroscience - Receptor signaling: GPCRs, ion channels, RTKs-Neuro, transporters (SLC & ABC)		
20689S HCARI/GPR81 (F9I8Q) Rabbit Monoclonal Antibody	WB, IHC-P, IF-IC	H
20689T		

© 2026 Cell Signaling Technology, Inc. CST, Cell Signaling Technology, and InTraSeq are registered trademarks of Cell Signaling Technology, Inc. 10x Genomics, 10x, Feature Barcode, and Chromium are the trademarks or registered trademarks of 10x Genomics, Inc. All other trademarks are the property of their respective owners. Visit cellsignal.com/trademarks for more information. Subject to patents licensed from 10x Genomics, Inc., for use with single-cell (i.e., Chromium) 10x products.



Learn more at
cellsignal.com/newproducts

