

## New Products from CST—July 2026

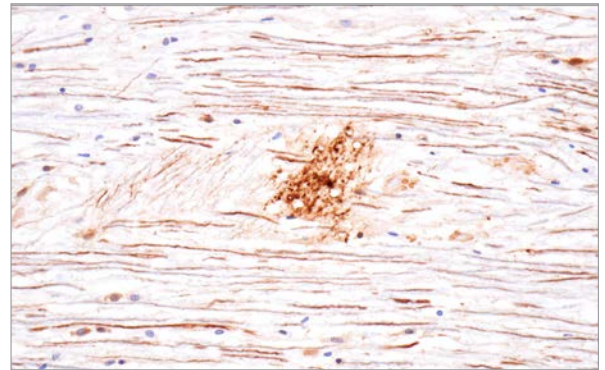
We are continually expanding our portfolio to meet your research needs. Check out the new products released this month.

### Peripheral Tau (F2B9A) Rabbit Monoclonal Antibody #58330

#### High-Molecular-Weight Tau

Tau is a microtubule-associated protein (MAP) that promotes and stabilizes microtubule assembly within axons. Peripheral Tau, also referred to as “Big Tau,” is a high-molecular-weight (HMW) isoform of the Tau protein characterized by the insertion of exon 4a, which encodes approximately 250 amino acids, within the N-terminal domain. While Tau is expressed as multiple low-molecular-weight (LMW) isoforms in the majority of neurons within the central nervous system (CNS), it is expressed as the HMW isoform in peripheral nervous system (PNS) neurons and a small subset of CNS neurons. Compared to LMW Tau isoforms, peripheral Tau exhibits lower hydrophobicity and lower predicted  $\beta$ -sheet content, making it less prone to aggregation. #58330 is suitable for WB, IP, and IHC-P) with human samples. #70448, which detects brain-derived Tau, is validated for WB using human samples.

**KEYWORDS:** Neurodegenerative diseases, microtubule-associated protein, high-molecular-weight isoform



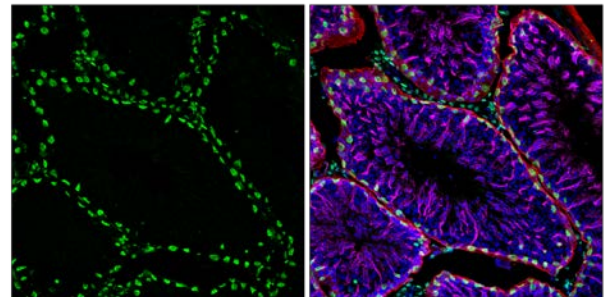
**IHC-P:** IHC analysis of paraffin-embedded ALS spinal cord using #58330.

### ZEB2 (F4P4Y) Rabbit Monoclonal Antibody #79314

#### A Master Regulator of EMT

ZEB2 (also known as SIP1) is a master regulator of epithelial-mesenchymal transition (EMT) that represses the transcription of key targets, including E-cadherin, via binding to E-box sequences. It interacts with Smad complexes and associated cofactors downstream of TGF- $\beta$ /BMP signaling to spatiotemporally regulate neural crest cell migration and neural stem cell fate determination during development. In humans, haploinsufficiency of ZEB2 is well established as the underlying cause of Mowat-Wilson syndrome. Furthermore, ZEB2 has been reported to participate in a diverse array of biological phenomena; these include cancer invasion and metastasis, chemoresistance, immune evasion mechanisms mediated by the induction of PD-L1/CCL2 expression in the tumor microenvironment, T/NK cell differentiation, phenotypic maintenance of myeloid cells, the pathogenesis of hematological malignancies, and organ fibrosis associated with chronic inflammation. #79314 is validated for WB, IP, IF-F, and IF-IC using human, mouse, rat, and monkey samples.

**KEYWORDS:** Epithelial-mesenchymal transition (EMT), TGF- $\beta$ /BMP signaling, Mowat-Wilson syndrome



**IF-F:** Confocal IF analysis of fixed frozen mouse testis using #79314 and beta3-Tubulin (E9F3E) Mouse Monoclonal Antibody (Alexa Fluor® 647 Conjugate) #82087 (magenta pseudocolor). Free secondary binding sites were then blocked with Rabbit (DA1E) Monoclonal Antibody IgG Isotype Control #3900 prior to co-labeling with alpha-Smooth Muscle Actin (D4K9N) Rabbit Monoclonal Antibody (Alexa Fluor® 555 Conjugate) #60839 (red) and ProLong Gold Antifade Reagent with DAPI #8961 (blue).



Learn more at  
[cellsignal.com/newproducts](https://cellsignal.com/newproducts)

PRODUCT	APPLICATIONS	REACTIVITY
<b>Cell Biology - Adhesion/Extracellular Matrix</b>		
<b>72595S</b> CD42d (F5B9F) Rabbit Monoclonal Antibody	WB, FC-FP, FC-L	H
<b>72595T</b>		
<b>70237S</b> CD42d (F8B1E) Rabbit Monoclonal Antibody	WB, IHC-P	H
<b>70237T</b>		
<b>31667S</b> GPA33 (F4Z4S) Rabbit Monoclonal Antibody	WB, FC-FP	H
<b>31667T</b>		
<b>10302S</b> VE-Cadherin (F4K3Y) Rabbit Monoclonal Antibody (Alexa Fluor® 488 Conjugate)	IHC-P, IF-F, IF-IC	M
<b>17093S</b> VE-Cadherin (F4K3Y) Rabbit Monoclonal Antibody (Alexa Fluor® 555 Conjugate)	IHC-P, IF-F, IF-IC	M
<b>95387S</b> VE-Cadherin (F4K3Y) Rabbit Monoclonal Antibody (Alexa Fluor® 647 Conjugate)	IHC-P, IF-F, IF-IC	M
<b>29066S</b> Vimentin (D21H3) Mouse Chimeric Monoclonal Antibody	IHC-P, IF-IC	H, M, R, Hm, Mk
<b>29066T</b>		
<b>Cell Biology - Apoptosis</b>		
<b>96297SF</b> FLIP (D5J1E) Rabbit Monoclonal Antibody (BSA and Azide Free)	WB	H, M, R
<b>74735T</b> PANoptosome Antibody Sampler Kit	-	-
<b>27165SF</b> Phospho-RIP3 (Ser227) (D6W2T) Rabbit Monoclonal Antibody (BSA and Azide Free)	WB, IF-IC	H
<b>Cell Biology - Ca, cAMP &amp; Lipid Signaling</b>		
<b>55387S</b> RyR2 (F5R5B) Rabbit Monoclonal Antibody	WB, IF-F	H, M, R
<b>55387T</b>		
<b>Cell Biology - Cytoskeletal</b>		
<b>36143S</b> MARK4 (F7V5Q) Rabbit Monoclonal Antibody	WB	H, M, R
<b>36143T</b>		
<b>Cell Biology - DNA Damage/Senescence</b>		
<b>58366SF</b> ATM (D2E2) Rabbit Monoclonal Antibody (BSA and Azide Free)	WB	H, M
<b>53719SF</b> Phospho-ATM (Ser1981) (D25E5) Rabbit Monoclonal Antibody (BSA and Azide Free)	WB	H
<b>Cell Biology - Growth factors &amp; Cytokines</b>		
<b>69960S</b> PDGFB (F7P5P) Rabbit Monoclonal Antibody	WB	H
<b>69960T</b>		
<b>Cell Biology - MAP kinase</b>		
<b>92348C</b> PathScan® RP FRA1 Sandwich ELISA Kit	ELISA+	H, M
<b>92578C</b> PathScan® Phospho-FRA1 (Ser265) Sandwich ELISA Kit	ELISA+	H
<b>34043S</b> MEK1 (F9C9B) Rabbit Monoclonal Antibody	WB	H, M, R
<b>34043T</b>		
<b>70459SF</b> Phospho-p44/42 MAPK (Erk1/2) (Thr202/Tyr204) (E10) Mouse Monoclonal Antibody (BSA and Azide Free)	WB, FC-FP	H, M, R, Hm, Mk, Mi, Z, B, Pg
<b>Cell Biology - Proteostasis</b>		
<b>24546C</b> PathScan® RP ISG15 Sandwich ELISA Kit	ELISA+	H
<b>Developmental Biology - DIFFERENTIATION - Transcription Factor</b>		
<b>36829SF</b> INSM1 (F7P8K) Rabbit Monoclonal Antibody (BSA and Azide Free)	WB	H
<b>84497SF</b> Phospho-c-Myb (Ser11) (F6D5K) Rabbit Monoclonal Antibody (BSA and Azide Free)	WB, IHC-P	H, M
<b>Developmental Biology - HIPPO</b>		
<b>60062SF</b> Pan-TEAD (D3F7L) Rabbit Monoclonal Antibody (BSA and Azide Free)	WB	H, M, R, Mk
<b>66079S</b> VGLL1 (F314N) Rabbit Monoclonal Antibody	WB, IF-IC, FC-FP	H
<b>66079T</b>		
<b>Developmental Biology - TGFB/BMP</b>		
<b>79314S</b> ZEB2 (F4P4Y) Rabbit Monoclonal Antibody	WB, IP, IF-F, IF-IC	H, M, R, Mk
<b>79314T</b>		
<b>Epigenetics - Chromatin Acylation and Phosphorylation</b>		
<b>28996S</b> JARID1A (F8L1U) Rabbit Monoclonal Antibody	WB	H, M, R, Mk
<b>28996T</b>		
<b>93460S</b> JARID1D (F5L8I) Rabbit Monoclonal Antibody	WB, IP	M
<b>93460T</b>		
<b>87801S</b> SirT4 (F6Z7D) Rabbit Monoclonal Antibody	WB, IP	H, M, R, Mk
<b>87801T</b>		
<b>Epigenetics - General Transcription Factors</b>		
<b>93301S</b> ETV1 (F7J3H) Rabbit Monoclonal Antibody	WB, IP, IF-IC	H
<b>93301T</b>		
<b>Epigenetics - Histones and Histone Modifications</b>		
<b>5748P</b> Histone H3 (D1H2) Rabbit Monoclonal Antibody (Biotinylated)	WB, ELISA+	H, M, R, Mk, (Hm, C, Dm, X, Z, B, F)



Learn more at  
[cellsignal.com/newproducts](https://cellsignal.com/newproducts)



**Cell Signaling**  
 TECHNOLOGY®

PRODUCT	APPLICATIONS	REACTIVITY
<b>Epigenetics - RNA Processing</b>		
<b>48372T</b> G3BP1 (F6X8V) Mouse Monoclonal Antibody	WB, WB-S, IF-IC	H
<b>Immunology - Adoptive Cell Therapy and Cancer Vaccines</b>		
<b>24075S</b> P2A/T2A (3H4-3A5) Mouse Monoclonal Antibody (Alexa Fluor® 488 Conjugate)	FC-FP	All
<b>60777S</b> P2A/T2A (3H4-3A5) Mouse Monoclonal Antibody (Alexa Fluor® 647 Conjugate)	FC-FP	All
<b>45870S</b> P2A/T2A (3H4-3A5) Mouse Monoclonal Antibody (PE Conjugate)	FC-FP	All
<b>Immunology - Autoimmunity and Inflammation</b>		
<b>40536S</b> IFNGR1 (F2S4I) Rabbit Monoclonal Antibody	WB, IP, FC-FP, FC-L	M
<b>40536T</b>		
<b>Immunology - Cell Autonomous Innate Immunity</b>		
<b>53036S</b> SIKE (F1A5Y) Rabbit Monoclonal Antibody	WB, IP	H
<b>53036T</b>		
<b>83128S</b> ZBP1 (F9T1U) Rabbit Monoclonal Antibody	WB, IP, FC-FP	H
<b>83128T</b>		
<b>Immunology - Immune Checkpoints and Ligands</b>		
<b>65512S</b> PD-1 (Intracellular Domain) (D7D5W) Feline Chimeric Monoclonal Antibody	IF-F	M, (R, Hm)
<b>65512T</b>		
<b>80669S</b> PD-1 (Intracellular Domain) (D7D5W) Horse Chimeric Monoclonal Antibody	IF-F	M, (R, Hm)
<b>80669T</b>		
<b>33029S</b> PD-L1 (F3Z1T) Feline Chimeric Monoclonal Antibody	IHC-P	M
<b>33029T</b>		
<b>73028S</b> TIM-3 (D3M9R) Feline Chimeric Monoclonal Antibody	IHC-P	M
<b>73028T</b>		
<b>Immunology - Inflammasome</b>		
<b>82739S</b> CARD8 (F6U5C) Rabbit Monoclonal Antibody	WB, IP	H
<b>82739T</b>		
<b>Immunology - Lymphocyte Signaling</b>		
<b>17590S</b> HPK1 (E1C3L) Rabbit Monoclonal Antibody (Alexa Fluor® 700 Conjugate)	FC-FP	H
<b>Immunology - NfκappaB Signaling</b>		
<b>57253S</b> NIK (F1L5W) Rabbit Monoclonal Antibody	WB	M
<b>57253T</b>		
<b>Immunology - Phenotyping and Functional Markers</b>		
<b>40345S</b> CD8 alpha (F6F3L) Rabbit Monoclonal Antibody	WB, IHC-P, IF-F, FC-FP, FC-L	M
<b>40345T</b>		
<b>45977S</b> CD16 (D1N9L) Feline Chimeric Monoclonal Antibody	IHC-P	H, Mk
<b>45977T</b>		
<b>55228S</b> CD20 (E3N7O) Rabbit Monoclonal Antibody (Alexa Fluor® 750 Conjugate)	IHC-P, IF-F	M, R
<b>92463S</b> CD31 (PECAM-1) (F8M3S) Mouse Chimeric Monoclonal Antibody	IHC-P	H, Mk
<b>92463T</b>		
<b>59914S</b> CD45 (Intracellular Domain) (D9M8I) Mouse Chimeric Monoclonal Antibody	IHC-P	H, Mk
<b>59914T</b>		
<b>67816S</b> CD68 (D4B9C) Feline Chimeric Monoclonal Antibody	IHC-P	H, Mk
<b>67816T</b>		
<b>86690S</b> CD68 (D4B9C) Mouse Chimeric Monoclonal Antibody	IHC-P	H, Mk
<b>86690T</b>		
<b>46283S</b> CD101/IgSF2 (F2L8J) Rabbit Monoclonal Antibody	WB	M
<b>46283T</b>		
<b>53785S</b> CD206/MRC1 (E6T5J) Feline Chimeric Monoclonal Antibody	IHC-P, IF-F	H, M, R, Mk
<b>53785T</b>		
<b>69890S</b> CD206/MRC1 (E6T5J) Horse Chimeric Monoclonal Antibody	IF-F	H, M, R, Mk
<b>69890T</b>		
<b>88171S</b> CD206/MRC1 (E6T5J) Mouse Chimeric Monoclonal Antibody	IF-F	H, M, R, Mk
<b>88171T</b>		
<b>28830S</b> Granzyme B (E5V2L) Feline Chimeric Monoclonal Antibody	IHC-P	M
<b>28830T</b>		
<b>82762S</b> Fc-gamma RIIB (D8F9C) Rabbit Monoclonal Antibody (Alexa Fluor® 647 Conjugate)	IHC-P, FC-FP	M
<b>Immunology - Toll-Like and C-Type Lectin Receptors</b>		
<b>40665SF</b> Phospho-IRAK4 (Thr345/Ser346) (D6D7) Rabbit Monoclonal Antibody (BSA and Azide Free)	WB	H, (M, R, B, Dg)
<b>Immunology - Tumor Microenvironment</b>		
<b>30525S</b> Beta2-microglobulin (D8PIH) Rabbit Monoclonal Antibody (Alexa Fluor® 555 Conjugate)	IHC-P	H, Mk



Learn more at  
[cellsignal.com/newproducts](https://cellsignal.com/newproducts)

PRODUCT	APPLICATIONS	REACTIVITY
<b>Immunology - Tumor Microenvironment (cont.)</b>		
<b>50918S</b> PF4 (F9K6Z) Rabbit Monoclonal Antibody	WB, IHC-P	H
<b>50918T</b>		
<b>Metabolism - Autophagy</b>		
<b>84702S</b> IRGQ (F5Z5R) Rabbit Monoclonal Antibody	WB	H
<b>84702T</b>		
<b>35311T</b> Macropinocytosis Antibody Sampler Kit	-	-
<b>Metabolism - Biochemical Metabolism and Signaling - Lipids</b>		
<b>82675T</b> Transcriptional Regulation of Lipid Metabolism Antibody Sampler Kit	-	-
<b>Metabolism - Biochemical Metabolism and Signaling - Nucleotides</b>		
<b>70163S</b> ENPP1 (F5T3Y) Rabbit Monoclonal Antibody	WB, IP	H
<b>70163T</b>		
<b>24499S</b> Na,K-ATPase alpha1 (F7K1P) Feline Chimeric Monoclonal Antibody	IHC-P, IF-F	H, M, R
<b>24499T</b>		
<b>Metabolism - PI3K/Akt/mTOR Signaling</b>		
<b>90368SF</b> Phospho-p70 S6 Kinase (Thr389) (108D2) Rabbit Monoclonal Antibody (BSA and Azide Free)	WB	H, M, R, Mk, (C)
<b>Metabolism - REDOX/Energy Metabolism</b>		
<b>58331T</b> Mitochondrial Dynamics Antibody Sampler Kit	-	-
<b>Motif - Motif</b>		
<b>51411SF</b> Phospho-PKC Substrate Motif [(R/K)XpSX(R/K)] MultiMab® Rabbit Monoclonal Antibody mix (BSA and Azide Free)	WB, FC-FP	H, All
<b>Neuroscience - Alzheimer's disease</b>		
<b>92489S</b> beta-Amyloid (1-42) (D9A3A) Feline Chimeric Monoclonal Antibody	IF-F	H, (M, R)
<b>92489T</b>		
<b>67275S</b> beta-Amyloid (1-42) (D9A3A) Horse Chimeric Monoclonal Antibody	IF-F	H, (M, R)
<b>67275T</b>		
<b>41078S</b> beta-Amyloid (1-42) (D9A3A) Mouse Chimeric Monoclonal Antibody	IF-F	H, (M, R)
<b>41078T</b>		
<b>58330S</b> Peripheral Tau (F2B9A) Rabbit Monoclonal Antibody	WB, IP, IHC-P	H
<b>58330T</b>		
<b>Neuroscience - Neural function (neurite extension, axonal guidance, synaptogenesis, myelination and neuron-glia cell interactions)</b>		
<b>57508SF</b> ALDH1L1 (E712Q) Rabbit Monoclonal Antibody (BSA and Azide Free)	WB, IF-F	H, M, R
<b>18962S</b> Ermin (F407S) Rabbit Monoclonal Antibody	WB, IF-F	H, M, R
<b>18962T</b>		
<b>75169SF</b> Delta FosB (D3S8R) Rabbit Monoclonal Antibody (BSA and Azide Free)	WB	H, M, R, Mk
<b>99968S</b> GAD1 (D1F2M) Feline Chimeric Monoclonal Antibody	IF-F	M, R, (H)
<b>99968T</b>		
<b>24655S</b> GAD1 (D1F2M) Horse Chimeric Monoclonal Antibody	IF-F	M, R, (H)
<b>24655T</b>		
<b>58147S</b> GAD1 (D1F2M) Mouse Chimeric Monoclonal Antibody	IF-F	M, R, (H)
<b>58147T</b>		
<b>52402S</b> GAD2 (D5G2) Feline Chimeric Monoclonal Antibody	IF-F	H, M, R
<b>52402T</b>		
<b>75029S</b> GAD2 (D5G2) Horse Chimeric Monoclonal Antibody	IF-F	H, M, R
<b>75029T</b>		
<b>99497S</b> GAD2 (D5G2) Mouse Chimeric Monoclonal Antibody	IF-F	H, M, R
<b>99497T</b>		
<b>92647S</b> MAG (D4G3) Feline Chimeric Monoclonal Antibody	IF-F	H, M, R
<b>92647T</b>		
<b>98420S</b> MAG (D4G3) Horse Chimeric Monoclonal Antibody	IF-F	H, M, R
<b>98420T</b>		
<b>33044S</b> MAG (D4G3) Mouse Chimeric Monoclonal Antibody	IF-F	H, M, R
<b>33044T</b>		
<b>75340S</b> Phospho-Neurofilament-H (Ser801) (F4S5P) Rabbit Monoclonal Antibody	WB, IF-IC	H, R
<b>75340T</b>		
<b>80425SF</b> NPTXR (F8B3U) Rabbit Monoclonal Antibody (BSA and Azide Free)	WB	H, M, R
<b>61657S</b> PLP1 (E9V1N) Feline Chimeric Monoclonal Antibody	IF-F	H, M, R
<b>61657T</b>		
<b>72398S</b> PLP1 (E9V1N) Horse Chimeric Monoclonal Antibody	IF-F	H, M, R
<b>72398T</b>		



Learn more at  
[cellsignal.com/newproducts](https://cellsignal.com/newproducts)



**Cell Signaling**  
 TECHNOLOGY®

PRODUCT	APPLICATIONS	REACTIVITY
<b>Neuroscience - Neural function (neurite extension, axonal guidance, synaptogenesis, myelination and neuron-glia cell interactions) (cont.)</b>		
<b>81780S</b> PLP1 (E9VIN) Mouse Chimeric Monoclonal Antibody	IF-F	H, M, R
<b>81780T</b>		
<b>32741S</b> TBR1 (D6C6X) Feline Chimeric Monoclonal Antibody	IF-F	H, M, R
<b>32741T</b>		
<b>75660S</b> TBR1 (D6C6X) Horse Chimeric Monoclonal Antibody	IF-F	H, M, R
<b>75660T</b>		
<b>85802S</b> TBR1 (D6C6X) Mouse Chimeric Monoclonal Antibody	IF-F	H, M, R
<b>85802T</b>		
<b>Neuroscience - Neurodegeneration: Other</b>		
<b>98684S</b> HDGF2 (Cryptic Specific) (F1E8U) Rabbit Monoclonal Antibody	WB, IP, IF-IC	H
<b>98684T</b>		
<b>31913SF</b> Cleaved TMEM106B (Ser120) (F9W6O) Rabbit Monoclonal Antibody (BSA and Azide Free)	WB, IHC-P	H
<b>Neuroscience - Parkinson's disease</b>		
<b>69455S</b> CDK5 (D1F7M) Feline Chimeric Monoclonal Antibody	IF-F	H, M, R, Mk
<b>69455T</b>		
<b>91306S</b> CDK5 (D1F7M) Horse Chimeric Monoclonal Antibody	IF-F	H, M, R, Mk
<b>91306T</b>		
<b>20558S</b> CDK5 (D1F7M) Mouse Chimeric Monoclonal Antibody	IF-F	H, M, R, Mk
<b>20558T</b>		
<b>Neuroscience - Post-synapse</b>		
<b>32598S</b> AMPA Receptor 1 (GluA1) (D4N9V) Feline Chimeric Monoclonal Antibody	IF-F	M, R, (Mk, B, Dg)
<b>32598T</b>		
<b>66722S</b> AMPA Receptor 1 (GluA1) (D4N9V) Horse Chimeric Monoclonal Antibody	IF-F	M, R, (Mk, B, Dg)
<b>66722T</b>		
<b>80179S</b> AMPA Receptor 1 (GluA1) (D4N9V) Mouse Chimeric Monoclonal Antibody	IF-F	M, R, (Mk, B, Dg)
<b>80179T</b>		
<b>Neuroscience - Pre-synapse &amp; transmitters</b>		
<b>19221S</b> Neuropeptide Y (D7Y5A) Feline Chimeric Monoclonal Antibody	IF-F	H, M, R
<b>19221T</b>		
<b>32795S</b> Neuropeptide Y (D7Y5A) Horse Chimeric Monoclonal Antibody	IF-F	H, M, R
<b>32795T</b>		
<b>53162S</b> Neuropeptide Y (D7Y5A) Mouse Chimeric Monoclonal Antibody	IF-F	H, M, R
<b>53162T</b>		
<b>Neuroscience - Receptor signaling: GPCRs, ion channels, RTKs-Neuro, transporters (SLC &amp; ABC)</b>		
<b>93138S</b> Phospho-CFTR (Ser737) (F6A2K) Rabbit Monoclonal Antibody	WB	H
<b>93138T</b>		
<b>74137S</b> Kidins220 (F8D3R) Rabbit Monoclonal Antibody	WB, IP	H, M, R, Mk
<b>74137T</b>		
<b>41891S</b> mGluR5 (D6E7B) Feline Chimeric Monoclonal Antibody	IF-F	H, M, R
<b>41891T</b>		
<b>63910S</b> mGluR5 (D6E7B) Horse Chimeric Monoclonal Antibody	IF-F	H, M, R
<b>63910T</b>		
<b>84215S</b> mGluR5 (D6E7B) Mouse Chimeric Monoclonal Antibody	IF-F	H, M, R
<b>84215T</b>		
<b>54522S</b> NKCC1 (F5K3N) Rabbit Monoclonal Antibody	WB	H, M, R
<b>54522T</b>		
<b>Related Products - Secondary Antibody</b>		
<b>76333P2</b> Goat Anti-Feline IgG (H+L) Antibody (Alexa Fluor® 647 Conjugate)	IHC-P, IF-F, IF-IC	F
<b>25363P2</b> Goat Anti-Rabbit IgG, Fc Fragment Antibody (Alexa Fluor® 555 Conjugate)	IHC-P, IHC-F, IF-F, IF-IC	Rab
<b>70872P2</b> Goat Anti-Rabbit IgG, Fc Fragment Antibody (Alexa Fluor® 594 Conjugate)	IHC-P, IF-F, IF-IC	Rab
<b>46023P2</b> Goat Anti-Rabbit IgG, Fc Fragment Antibody (Alexa Fluor® 647 Conjugate)	IHC-P, IHC-F, IF-F, IF-IC	Rab
<b>86426P2</b> Goat Anti-Rabbit IgG, Fc Fragment Antibody (FITC Conjugate)	IF-F, IF-IC	Rab
<b>39075P2</b> Goat Anti-Feline IgG, Fc Fragment Antibody (FITC Conjugate)	IHC-P, IF-F, IF-IC	F
<b>99224P2</b> Goat Anti-Feline IgG, Fc Fragment Antibody (Texas Red Conjugate)	IF-F, IF-IC	F
<b>55182P2</b> Goat Anti-Horse IgG, Fc Fragment Antibody (Texas Red Conjugate)	IF-F, IF-IC	Hr
<b>70496P2</b> Goat Anti-Horse IgG, Fc Fragment Antibody (TRITC Conjugate)	IF-F, IF-IC	Hr
<b>90440P2</b> Goat Anti-Mouse IgG2a, Fc gamma Specific Antibody (Alexa Fluor® 594 Conjugate)	IHC-P, IF-F, IF-IC	M

© 2026 Cell Signaling Technology, Inc. All rights reserved. Cell Signaling Technology, PathScan, MultiMab and CST are registered trademarks of Cell Signaling Technology, Inc. Alexa Fluor is a registered trademark of Life Technologies Corporation. All other trademarks are the property of their respective owners. Visit [cellsignal.com/trademarks](https://cellsignal.com/trademarks) for more information.



Learn more at  
[cellsignal.com/newproducts](https://cellsignal.com/newproducts)

